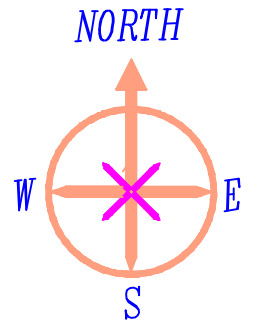


# SITE PLAN OF

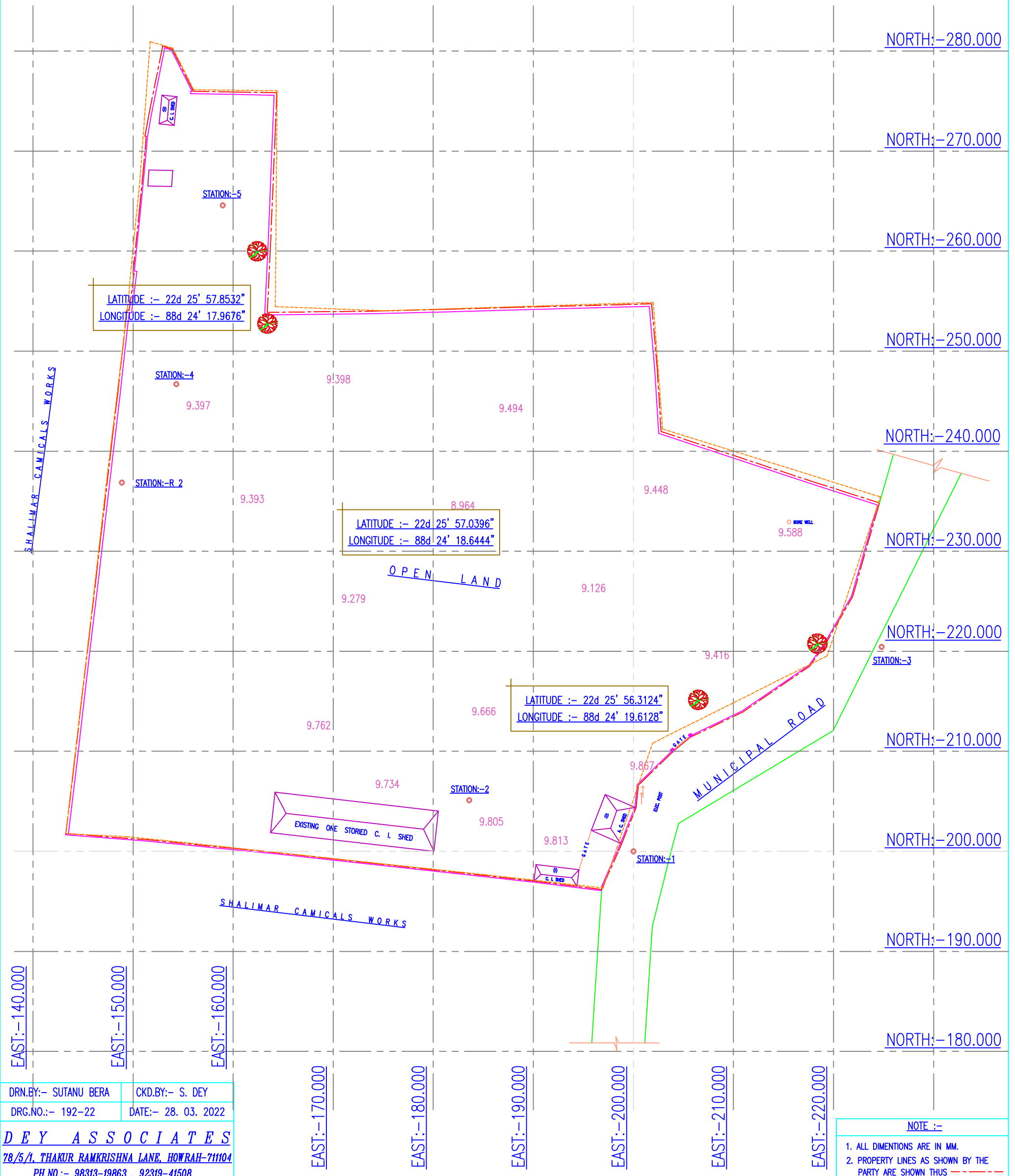
R.S. DAG NO. :- 2726 & 2727, R.S. KHATIN NO. :- 117 & 120,

J.L. NO. :- 56, MOUZA :- UKHILA PAIKPARA, P.S. :- SONARPUR,

DISTRICT :- SOUTH 24 PARAGANAS



TOTAL AREA OF LAND :- 3839.806 sq.mt. = 2 bi. 17 ka. 6 ch. 22 sft.



DRN.BY:- SUTANU BERA    CKD.BY:- S. DEY  
 DRG.NO.:- 192-22    DATE:- 28. 03. 2022  
**DEY ASSOCIATES**  
 78/5/1, THAKUR RAMKRISHNA LANE, HOWRAH-711104  
 PH.NO.:- 98313-19863 , 92319-41508

**NOTE :-**  
 1. ALL DIMENTIONS ARE IN MM.  
 2. PROPERTY LINES AS SHOWN BY THE PARTY ARE SHOWN THUS